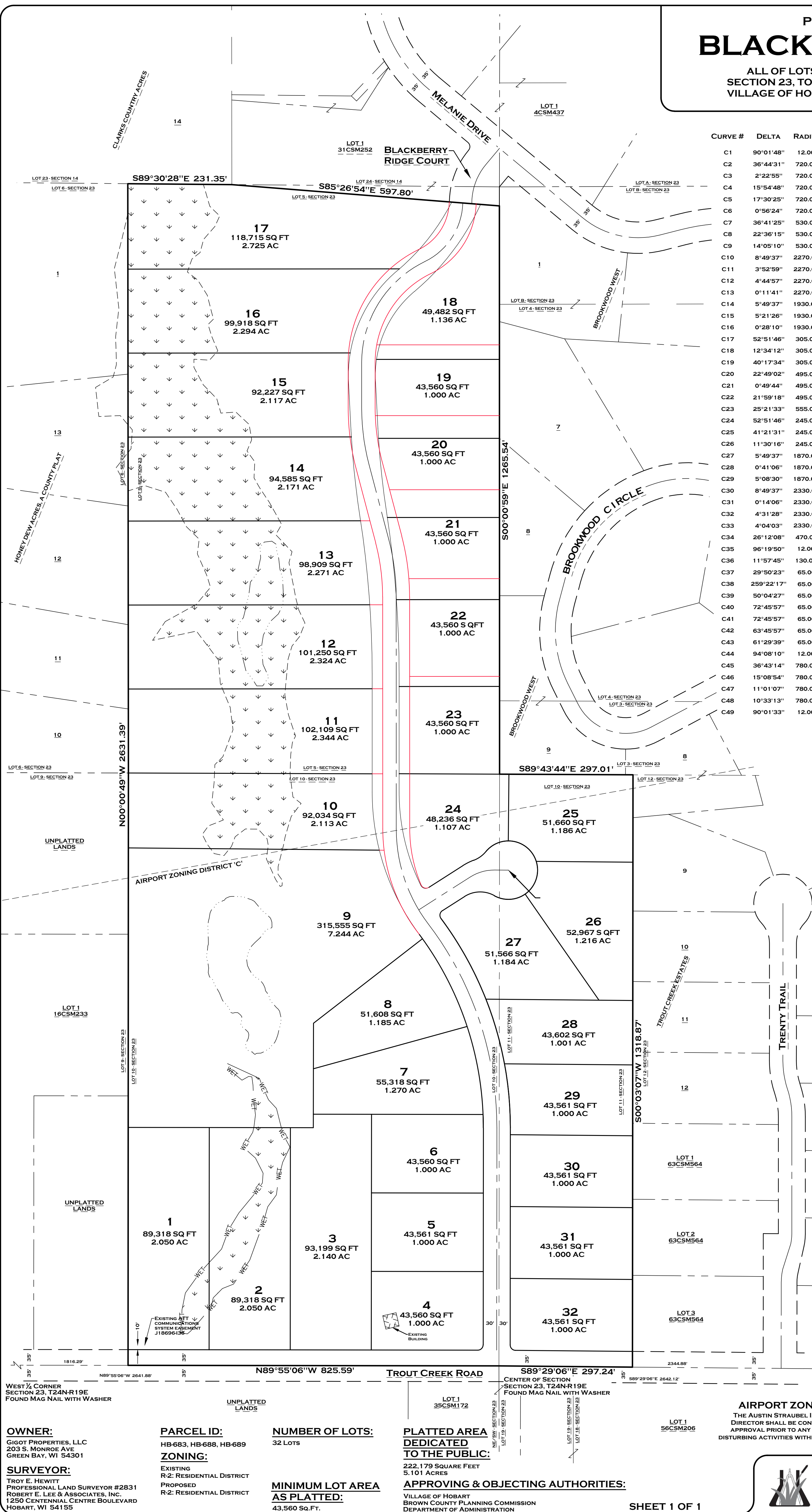


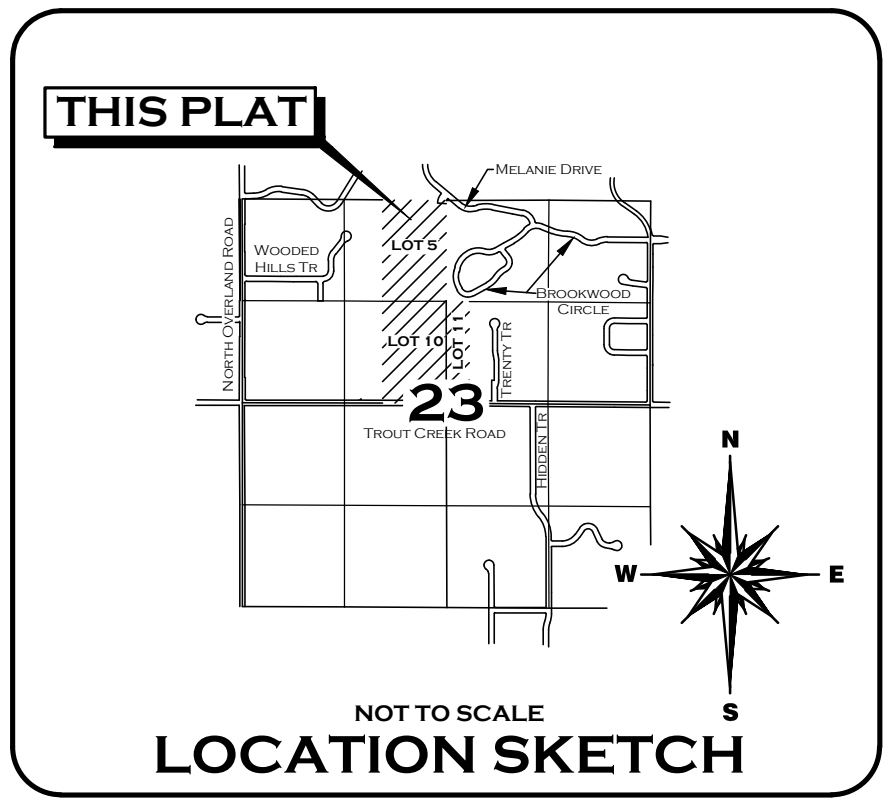
PRELIMINARY PLAT BLACKBERRY RIDGE

ALL OF LOTS 10 AND 11 AND PART OF LOT 5,
SECTION 23, TOWNSHIP 24 NORTH, RANGE 19 EAST
VILLAGE OF HOBART, BROWN COUNTY, WISCONSIN



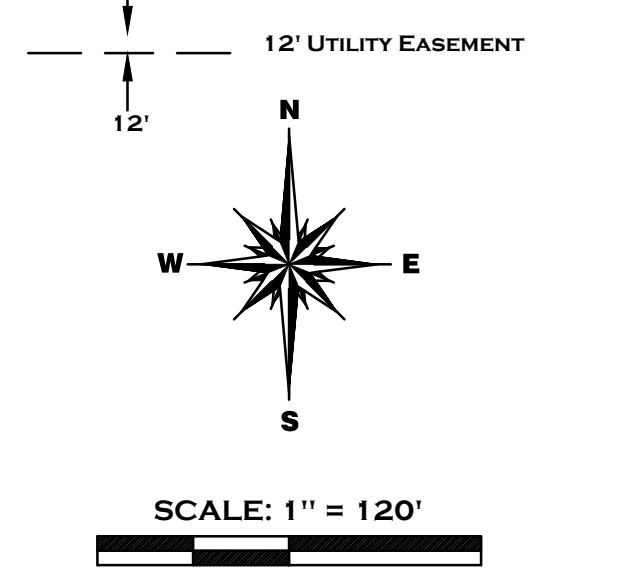
CURVE TABLE

CURVE #	DELTA	RADIUS	LENGTH	CHORD DIRECTION	CHORD LENGTH	TANGENT BEARING	SECOND TANGENT BEARING
C1	90°01'48"	12.00'	18.86'	N45°04'01"E	16.97'	S89°55'06"E	N00°03'07"E
C2	36°44'31"	720.00'	461.71'	N18°19'09.5"W	453.84'	N00°03'07"E	N36°41'25"W
C3	2°22'55"	720.00'	29.93'	N01°08'20.5"W	29.93'	N00°03'07"E	N02°19'48"W
C4	15°54'48"	720.00'	199.97'	N10°17'12"W	199.33'	N02°19'48"W	N18°14'36"W
C5	17°30'25"	720.00'	220.00'	N26°59'48.5"W	219.15'	N18°14'36"W	N35°45'01"W
C6	0°56'24"	720.00'	11.81'	N36°13'13"W	11.81'	N35°45'01"W	N36°41'25"W
C7	36°41'25"	530.00'	339.39'	N18°20'42.5"W	333.62'	N00°00'00"E	N36°41'25"W
C8	22°36'15"	530.00'	209.09'	N25°23'17.5"W	207.74'	N14°05'10"W	N36°41'25"W
C9	14°05'10"	530.00'	130.30'	N07°02'35"W	129.97'	N00°00'00"E	N14°05'10"W
C10	8°49'37"	2270.00'	349.71'	N04°24'48.5"W	349.36'	N00°00'00"E	N08°49'37"W
C11	3°52'59"	2270.00'	153.85'	N01°56'29.5"W	153.82'	N00°00'00"E	N03°52'59"W
C12	4°44'57"	2270.00'	188.15'	N06°15'27.5"W	188.10'	N03°52'59"W	N08°37'56"W
C13	0°11'41"	2270.00'	7.71'	N08°43'46.5"W	7.71'	N08°37'56"W	N08°49'37"W
C14	5°49'37"	1930.00'	196.28'	N05°54'48.5"W	196.19'	N03°00'00"W	N08°49'37"W
C15	5°21'26"	1930.00'	180.46'	N06°08'54"W	180.39'	N03°28'10"W	N08°49'37"W
C16	0°28'10"	1930.00'	15.82'	N03°14'05"W	15.82'	N03°00'00"W	N03°28'10"W
C17	52°51'46"	305.00'	281.40'	N23°25'53"E	271.53'	N49°51'46"E	N03°00'00"W
C18	12°34'12"	305.00'	66.91'	N03°17'06"E	66.78'	N09°34'12"E	N03°00'00"W
C19	40°17'34"	305.00'	214.49'	N29°42'59"E	210.10'	N49°51'46"E	N09°34'12"E
C20	22°49'02"	495.00'	197.13'	N38°27'15"E	195.83'	N49°51'46"E	N27°02'44"E
C21	0°49'44"	495.00'	7.16'	N49°26'54"E	7.16'	N49°51'46"E	N49°02'03"E
C22	21°59'18"	495.00'	189.97'	N38°02'23"E	188.80'	N49°02'03"E	N27°02'44"E
C23	25°21'33"	555.00'	245.64'	S37°10'59.5"W	243.64'	S49°51'46"W	S24°30'13"W
C24	52°51'46"	245.00'	226.04'	S23°25'53"W	218.11'	S49°51'46"W	S03°00'00"E
C25	11°21'31"	245.00'	176.85'	S29°11'01.5"W	173.04'	S49°51'46"W	S08°30'16"W
C26	1°30'16"	245.00'	49.19'	S02°45'08"W	49.11'	S08°30'16"W	S03°00'00"E
C27	5°49'37"	1870.00'	190.17'	S05°54'48.5"E	190.09'	S03°00'00"E	S08°49'37"E
C28	0°41'06"	1870.00'	22.36'	S03°20'33"E	22.36'	S03°00'00"E	S03°41'06"E
C29	5°08'30"	1870.00'	167.82'	S06°15'21"E	167.76'	S03°41'06"E	S08°49'37"E
C30	8°49'37"	2330.00'	358.95'	S04°24'48.5"E	358.60'	S00°00'00"E	S08°49'37"E
C31	0°14'06"	2330.00'	9.55'	S08°42'34"E	9.55'	S08°35'31"E	S08°49'37"E
C32	4°31'28"	2330.00'	183.99'	S06°19'47"E	183.94'	S04°04'03"E	S08°35'31"E
C33	4°04'03"	2330.00'	165.41'	S02°02'01.5"E	165.38'	S00°00'00"E	S04°04'03"E
C34	26°12'08"	470.00'	214.94'	S13°06'04"E	213.07'	S00°00'00"E	S26°12'08"E
C35	96°19'50"	12.00'	20.18'	S74°22'03"E	17.88'	S26°12'08"E	N57°28'02"E
C36	11°57'45"	130.00'	27.14'	N63°26'54.5"E	27.09'	N69°25'47"E	N57°28'02"E
C37	29°50'23"	65.00'	33.85'	N54°30'35.5"E	33.47'	N69°25'47"E	N39°35'24"E
C38	259°22'17"	65.00'	294.25'	S10°43'27.5"E	100.04'	N61°02'18"W	N39°35'24"E
C39	50°04'27"	65.00'	56.81'	N64°37'37.5"E	55.02'	N89°39'51"E	N39°35'24"E
C40	72°45'57"	65.00'	82.55'	S53°57'10.5"E	77.11'	S17°34'12"E	N89°39'51"E
C41	72°45'57"	65.00'	82.55'	S18°48'46.5"W	77.11'	S55°11'45"W	S17°34'12"E
C42	63°45'57"	65.00'	72.34'	S87°04'43.5"W	68.66'	N61°02'18"W	S55°11'45"W
C43	61°29'39"	65.00'	69.76'	S88°12'51.5"W	66.46'	N61°02'18"W	S57°28'02"W
C44	94°08'10"	12.00'	19.72'	S10°23'57"W	17.57'	S57°28'02"W	S36°40'07"E
C45	36°43'14"	780.00'	499.90'	S18°18'30"E	491.39'	S00°03'07"W	S36°40'07"E
C46	15°08'54"	780.00'	206.22'	S29°05'40"E	205.62'	S21°31'13"E	S36°40'07"E
C47	11°01'07"	780.00'	150.00'	S16°00'39.5"E	149.77'	S10°30'06"E	S21°31'13"E
C48	10°33'13"	780.00'	143.67'	S05°13'29.5"E	143.47'	S00°03'07"W	S10°30'06"E
C49	90°01'33"	12.00'	18.85'	S44°57'39.5"E	16.97'	S00°03'07"W	S89°58'26"E



LEGEND

- FOUND 3/4" IRON ROD
- FOUND 1" IRON PIPE (UNLESS AS NOTED)
- RECORDED COUNTY MONUMENT
- SET 2.375" OUTSIDE DIA. X 30" IRON PIPE MIN. WT. 3.65 LB./LIN. FT.
- ALL OTHER LOT CORNERS MARKED WITH A 1.125" OUTSIDE DIA X 18" IRON PIPE WEIGHING 1.38 LBS./LIN. FT.



BEARINGS ARE BASED ON THE BROWN COUNTY COORDINATE SYSTEM. THE SOUTH LINE OF THE NORTHWEST 1/4 OF SECTION 23 BEARS N89°55'06"W.

ALL LINEAR MEASUREMENTS HAVE BEEN MADE TO THE NEAREST HUNDREDTH OF A FOOT AND COMPUTED TO THE NEAREST HUNDREDTH OF A FOOT.

ALL ANGULAR MEASUREMENTS HAVE BEEN MADE TO THE NEAREST THREE SECONDS AND COMPUTED TO THE NEAREST HALF SECOND.

OWNER:
GIGOT PROPERTIES, LLC
203 S. MONROE AVE
GREEN BAY, WI 54301

SURVEYOR:
TROY E. HEWITT
PROFESSIONAL LAND SURVEYOR #2831
ROBERT E. LEE & ASSOCIATES, INC.
1250 CENTENNIAL CENTRE BOULEVARD
HOBART, WI 54155

PARCEL ID:
HB-683, HB-689

ZONING:
EXISTING
R-2: RESIDENTIAL DISTRICT
PROPOSED
R-2: RESIDENTIAL DISTRICT

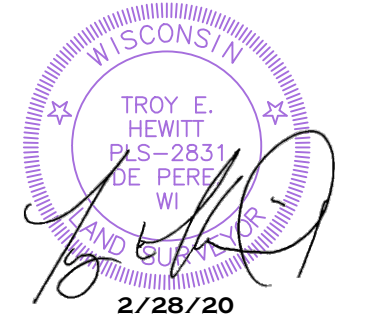
NUMBER OF LOTS:
32 LOTS

PLATTED AREA DEDICATED TO THE PUBLIC:
222,179 SQUARE FEET
5.101 ACRES

MINIMUM LOT AREA AS PLATTED:
43,560 SQ. FT.

APPROVING & OBJECTING AUTHORITIES:
VILLAGE OF HOBART
BROWN COUNTY PLANNING COMMISSION
DEPARTMENT OF ADMINISTRATION

AIRPORT ZONING DISTRICT
THE AUSTIN STRAUBEL INTERNATIONAL AIRPORT DIRECTOR SHALL BE CONTACTED FOR REVIEW AND APPROVAL PRIOR TO ANY DEVELOPMENT AND LAND DISTURBING ACTIVITIES WITHIN AIRPORT ZONING DISTRICT



ROBERT E. LEE & ASSOCIATES, INC.
ENGINEERING, SURVEYING, ENVIRONMENTAL SERVICES
1250 CENTENNIAL CENTRE BOULEVARD HOBART, WI 54155
920-662-9641 WWW.RELEINC.COM
R:\2300\2320\2320257.DWG \OPTION 7.DWG